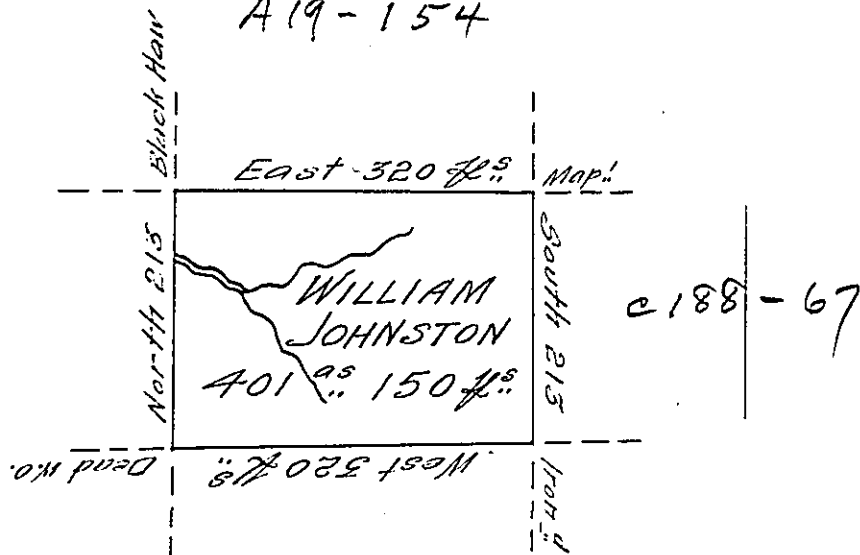


Joseph Marshall
A 19-154

John Elliott



John Clows
(?)

Situate on the West side of French Creek
on All^y. County Containing 401¹/₂ 150¹/₂ and
allowance of Six Per Cent for Roads &c. Sur-
veyed the 16th day of October 1794 In pur-
suance of his Improvement bearing date the
16th day of June 1794.

W^m Power D^y. Sr.

To Daniel Brodhead Esquire }
Surveyed & the General. }

IN TESTIMONY that the above is a copy of the original remaining on file in
the Department of Internal Affairs of Pennsylvania, made
conformably to an Act of Assembly approved the 16th day of
February, 1833, I have hereunto set my Hand and caused
the Seal of said Department to be affixed at Harrisburg,
this 17th day of September 1906

George D. Hoover
Secretary of Internal Affairs